



The Squaxin  
Island Tribe

## West Oakland Bay Restoration Phase 3 PSAR Large Cap

22-1175

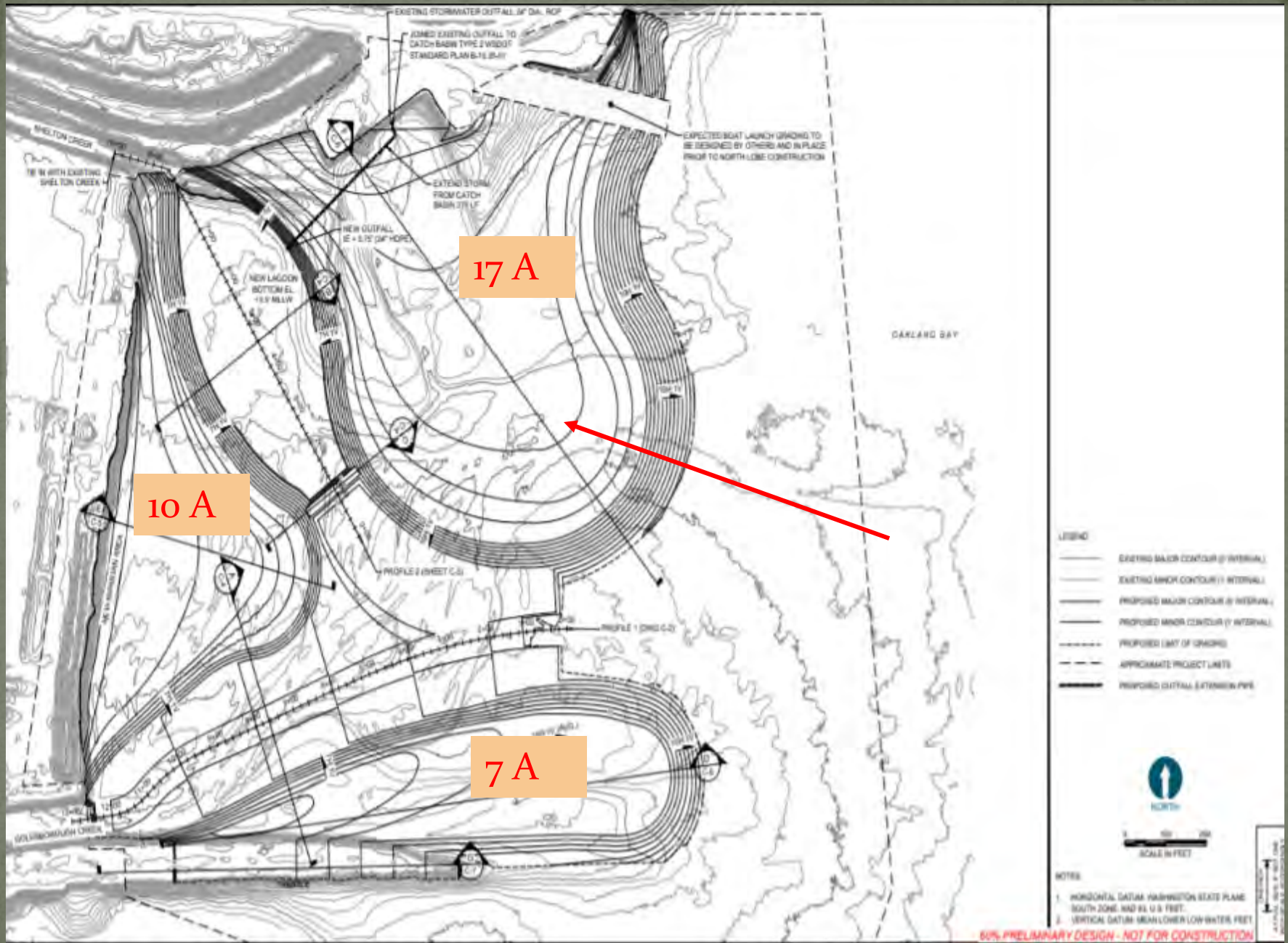












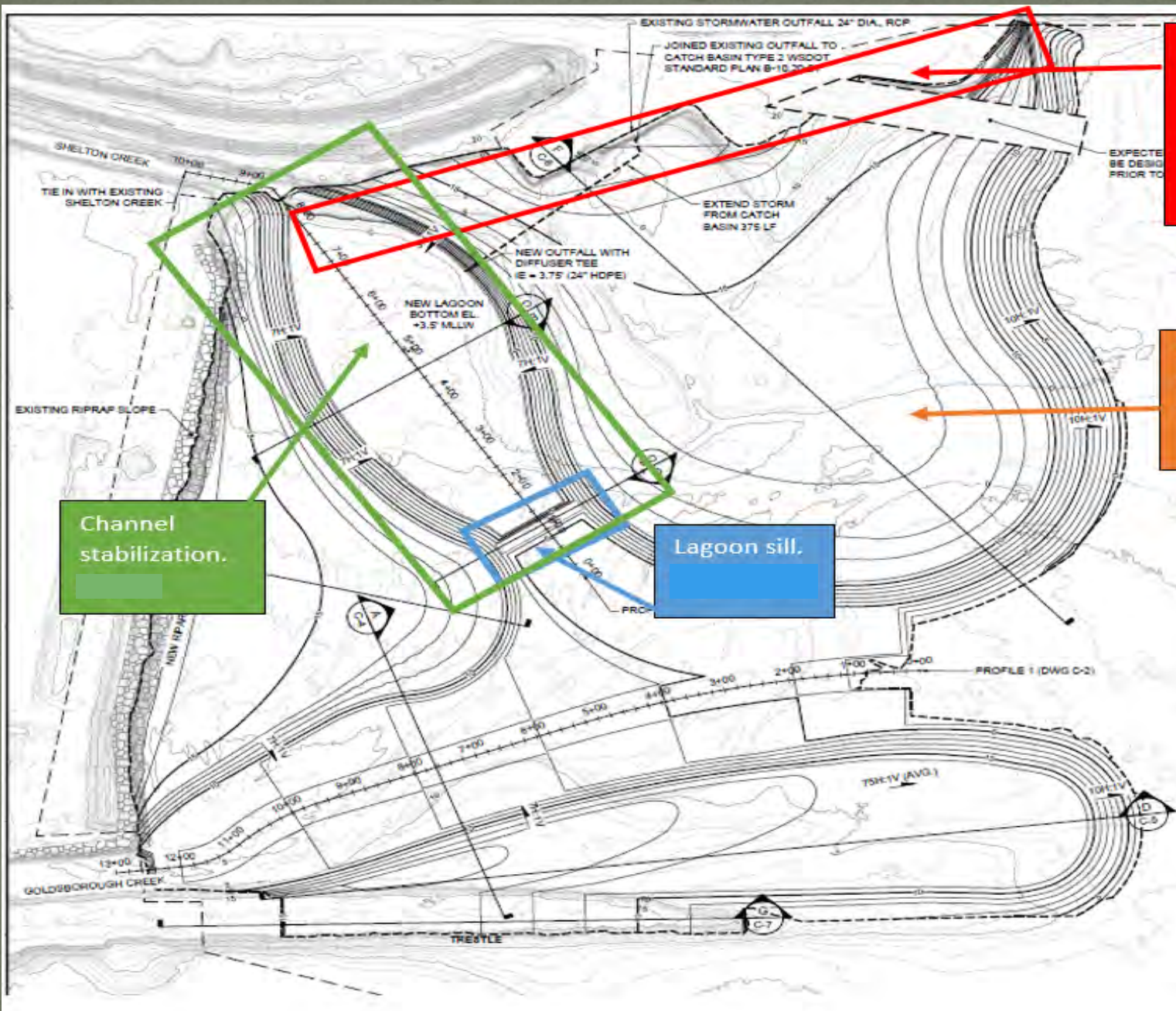


Cribwall and sheetpile armor removal.

Saltmarsh restoration.

Channel stabilization.

Lagoon sill.





# Budget

General Requirements	\$424,290
Environmental	\$21,000
Demolition	\$371,000
Lobe Construction	\$3,948,575
Creek Stabilization	\$304,620
Shelton Lagoon	\$469,320
Contingency	\$830,821
<u>Construction Total</u>	<u>\$6,369,626</u>
<u>Design/A&amp;E</u>	<u>\$353,868</u>
<b>Total Project-</b>	<b>\$7,077,362</b>
Match	\$1,543,890
<b>WRIA 14 PSAR Request-</b>	<b>\$5,533,472</b>



# West Oakland Bay Restoration



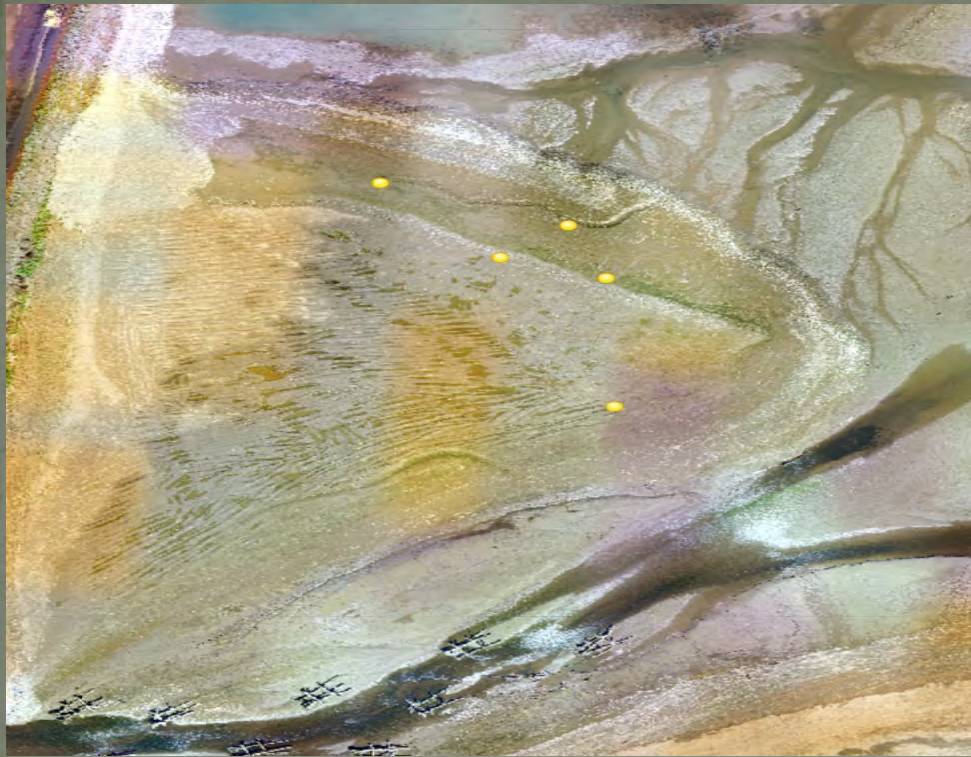














# Metrics Completed to Date

Purchase for Conservation	14 acres
Conservation Covenant	48 acres
Engineered Logjams	9
<i>Riparian Added</i>	<i>¼ mile</i>
<i>Riparian Planted</i>	<i>&gt;10,000</i>
<i>Sediment Cleanup Completed</i>	<i>&gt;100 acres</i>
<i>Creosote Pilings Removed</i>	<i>155</i>
Armoring Removed	½ mile
West Lobe Saltmarsh	10 acres
South Lobe Saltmarsh	7 acres

Blue metrics in italics are ancillary to the RCO grants



# West Oakland Bay Restoration





# Real Cost to Build

## **West Lobe**

- 60% \$2,700,000 = \$270,000/acre
- Built \$2,000,000 = \$250,000/acre
- 26% cheaper but 20% smaller than designed.

## **South Lobe**

- 60% \$2,100,000 = \$300,000/acre
  - Build \$1,600,000 = \$280,700/acre
  - 24% cheaper but 19% smaller than designed.
- 
- Combined = about 8% cheaper.