

HUDSON COVE HABITAT PROTECTION

2022 WRIA 14 SRFB grant proposal #22-1176



PROJECT SCOPE

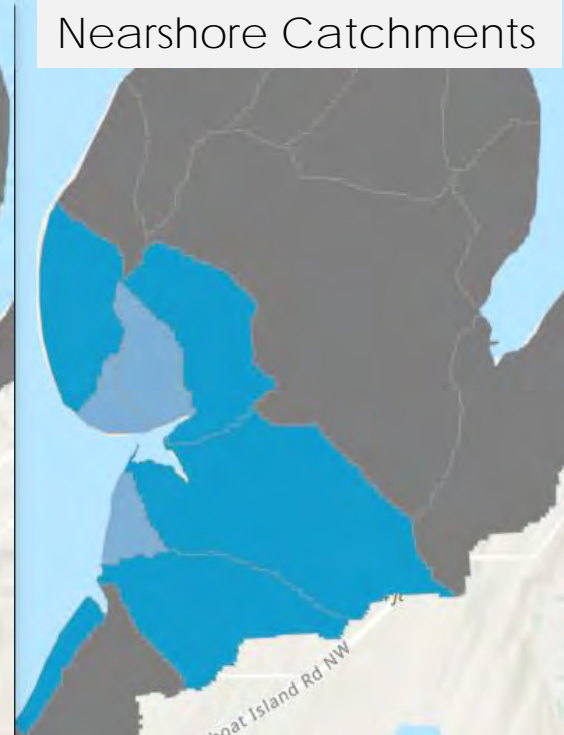
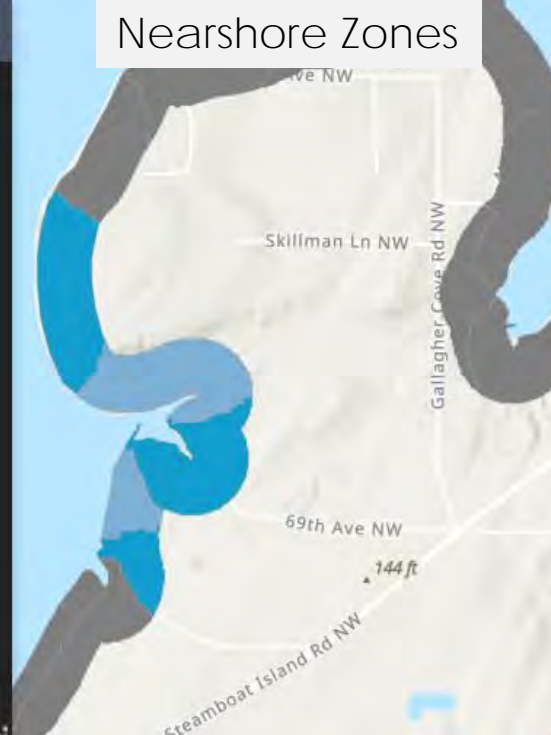
Protect in perpetuity:

- 228 acres of mostly undeveloped land
- 8,500' of unaltered marine shoreline
- 7.8-ac pocket estuary
- 9,500' of streambank (perennial & seasonal)
- Feeder bluffs
- Forage fish spawning
- Old cedar stands
- Riparian forests



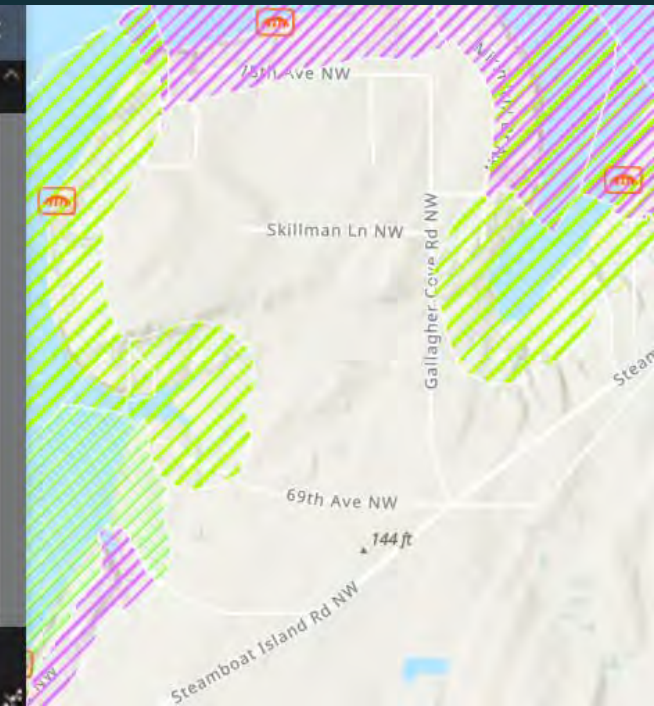


PROJECT SCORING CRITERIA

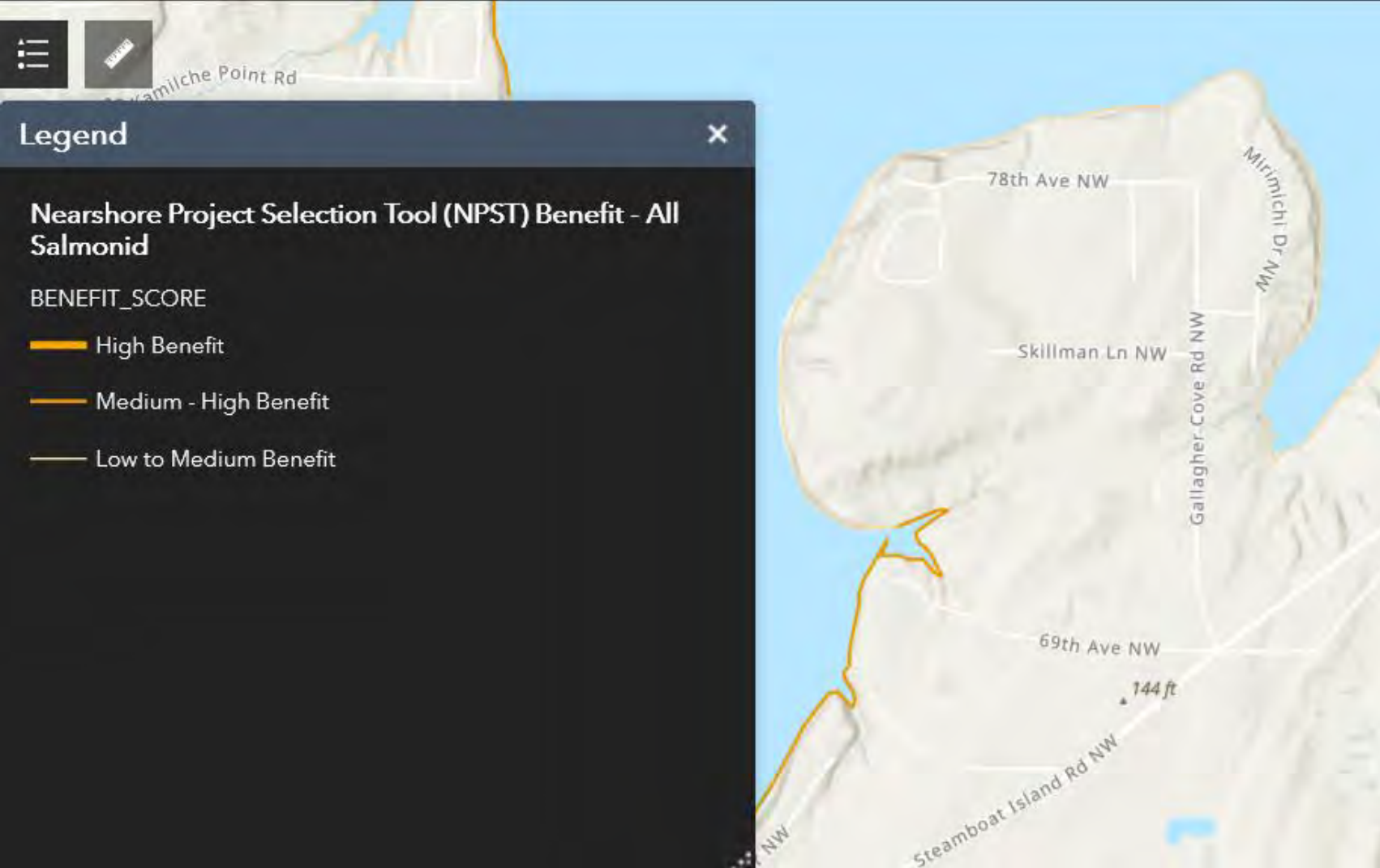


- Majority of property scores “Highest Priority” for Nearshore Conservation using Squaxin Island Tribe’s nearshore model
- PSNERP identifies property for protection

PRIORITY GEOGRAPHY







- Property's pocket estuary "Medium – High Benefit" to salmonids
- Pocket estuaries have been shown to provide important refuge for juvenile salmonids
- All 8,500' of property's marine shoreline is unarmored and used for forage fish spawning according to WDFW – important food source for salmonids
- Feeder bluffs and drift cell are unencumbered by bulkheads, docks, and other human-made impediments to gravel transport

BENEFIT TO SALMON

















CLT has conserved nearly 3,000 acres through conservation easements over 35 years

CLT has long relationship with landowner, time to get funding

Landowner has accepted appraised value

CE will protect shoreline, limit development of uplands, and prevent subdivision

FEASIBILITY



CE valued at:
\$4,000,000

Total project cost:
\$4,245,000

SRFB ask:
\$1,000,000 (23.6%)

COST

Consistent with proven scientific methods:

- Protection through conservation easements used for 100+ years
- Quality habitat provides food, protection & safe areas for juveniles
- Once ecosystem processes are disrupted, it can take decades for recovery to occur – even with focused restoration actions

Project protects high quality salmon habitat – no bulkheads, undeveloped shoreline

CE will allow for existing uses (residence and shellfish wet storage) and one additional residence, set-backs for all future activities beyond current regulations

Landowner has accepted appraised value, next step is grant funding

APPROACH & SEQUENCE

Permanent stewardship fund ~ \$2 million

Annual monitoring in perpetuity


Baseline Report & Stewardship Plan

Invasive species assessment, control & management

Accredited by Land Trust Accreditation Commission



STEWARDSHIP

An aerial photograph showing a dense forest of evergreen and deciduous trees along a coastline. A river or stream flows from the bottom right, creating a complex delta system with multiple channels and sandbars before meeting the ocean on the left. The forest is a mix of green evergreens and brownish deciduous trees, suggesting a temperate climate. The ocean is visible on the left side of the image.

CLT has been doing CE acquisition for 35 years

Long-term relationship with LO, acceptable CE value

Biggest challenge is funding

IMPLEMENTATION

QUESTIONS?

