



WRIA 14
SRFB In-lieu Site
Visits

March 17, 2022

Brian Combs
brianc@spsseg.org



Griggs Creek Griffinwood Fish Passage

RCO PROJECT
#22-1177

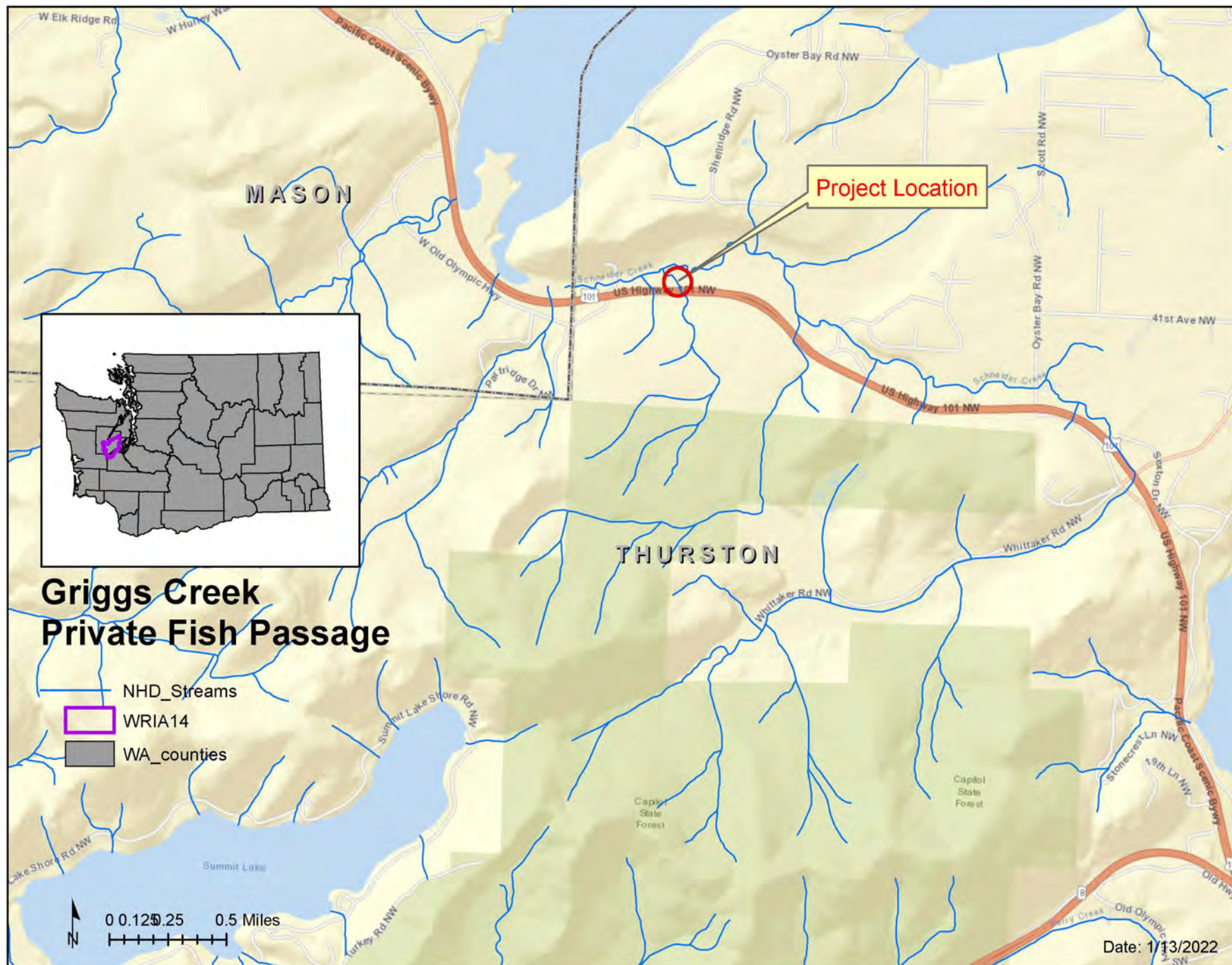
Request \$425,000

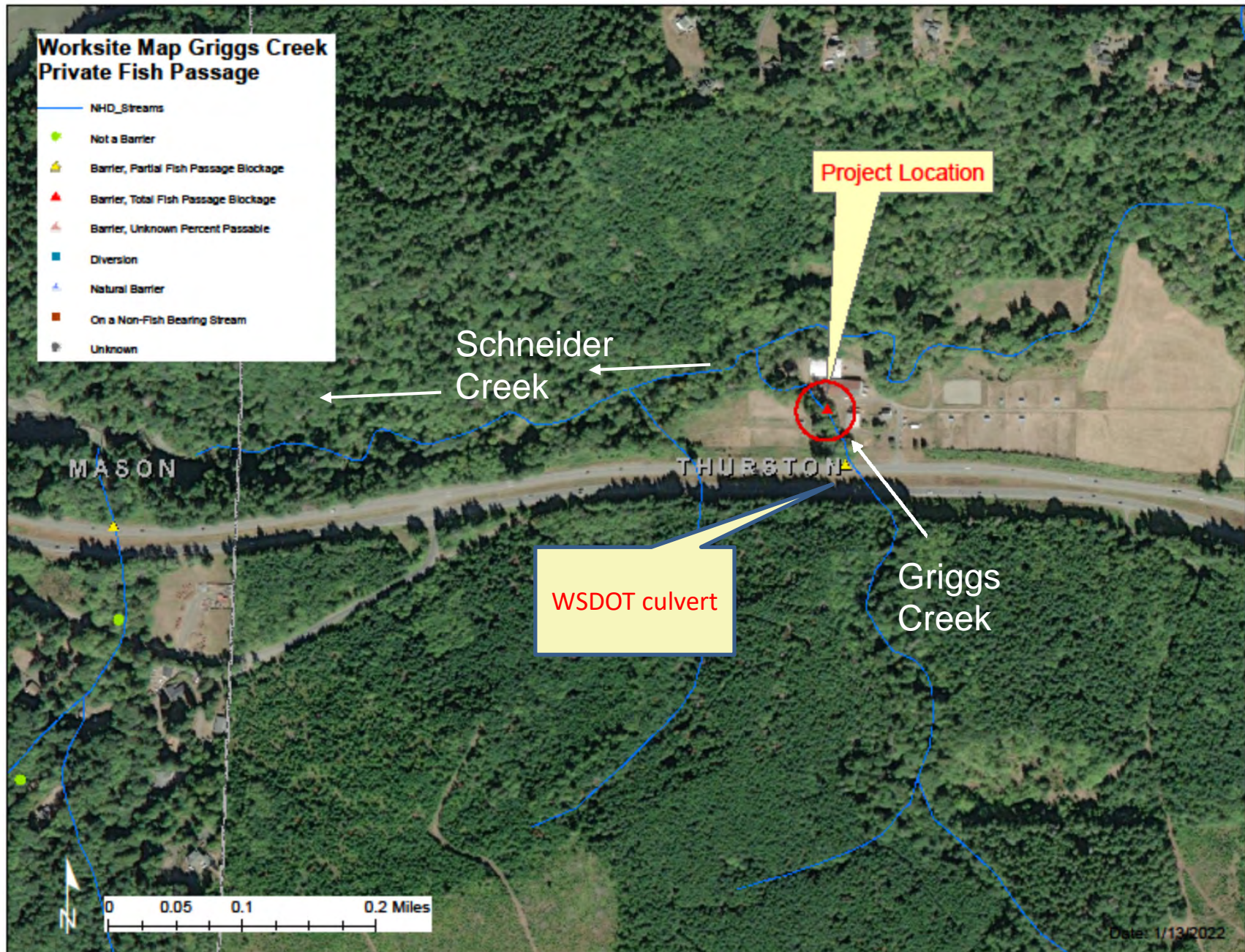
Tributary to Schneider
Creek,
Kennedy Creek-Totten
Inlet Estuary

Multi-organization
Coordinated Fish
Passage Improvement

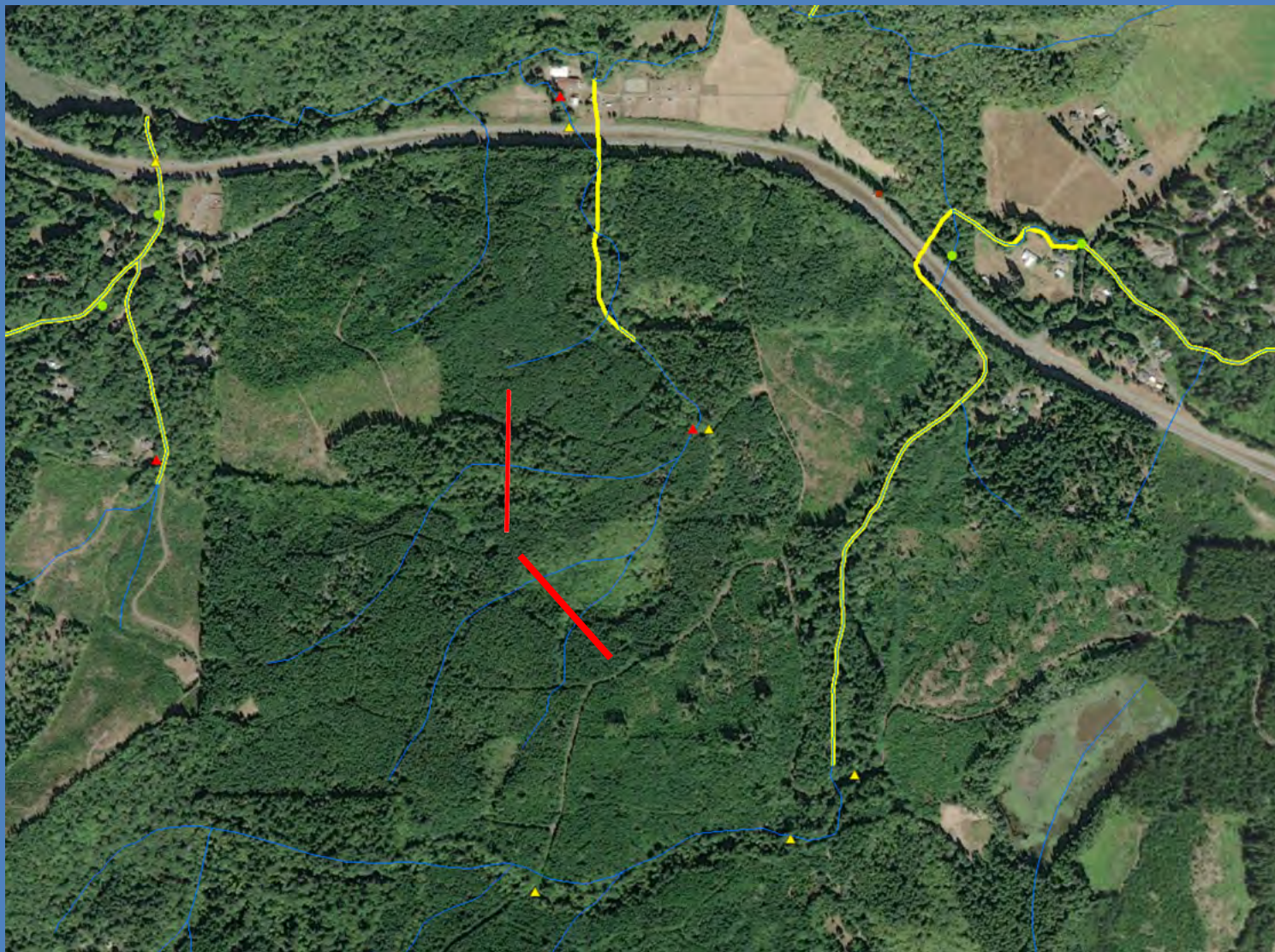
#1 Fish Passage Project
this round







HABITAT GAIN
1 MILE+ ESTIMATED



PROPOSAL

- **Restoration/Construction Grant**
- **Builds on current design effort and recent acquisitions**
- **Preliminary Design expected by April 2022**
- **Fish Passage with 1 mile+ habitat gain**
- **Replace total barrier with 40' span bridge**
- **Coordinated with 2 upstream projects (WSDOT and Manke)
to complete full passage within entire system**

WATERSHED COORDINATION

Current Preliminary Design in process, funded by WRIA 14 fish passage grant

WSDOT barrier design

- **Hydraulic and habitat analysis used for this design and MATCH**
- **Two designs and timing being coordinated**
- **2024 construction**

Manke Timber Lands barrier pending removal per Forest Practices process

- **Coordinated by Squaxin Island Tribe and WDNR**

All three barriers to be treated and open entire system for first time in decades

FSHPT RESTORATION PRIORITIES

Lower Schneider Creek Reach

Restoration priority: medium

Conservation priority: medium

Salmon resources

Salmon abundance (reach): high

Salmon abundance (watershed): high

Species present

Coho, Fall Chum, Winter Steelhead, Coastal Cutthroat

Limiting KEAs: stream temp, sediment, complexity

- **Add Fish Passage**

OTHER HABITAT BENEFITS

Excellent riparian corridor

Above 101: closed canopy, woody debris, shade, thermal refuge

Known spawning reach

Fall chum

coho and steelhead (potential)

Schneider Creek Basin

Expanded habitat for rearing, spawning, overwintering salmon within
Schneider basin

Dynamic sediment and channel changes to follow correction of WSDOT and Private
barrier

PROJECT READINESS

Landowner support and willingness

WSDOT coordination increases immediate need and chance of success

- **Must be 'forward compatible'**

Straight forward design and project conditions

Preliminary Designs to be complete





Projected Budget

Amount from RCO	\$ 425,000
Match WSDOT In-kind	\$ 35,000
<u>Match pending</u>	<u>\$ 40,000</u>
Project Total	\$ 500,000

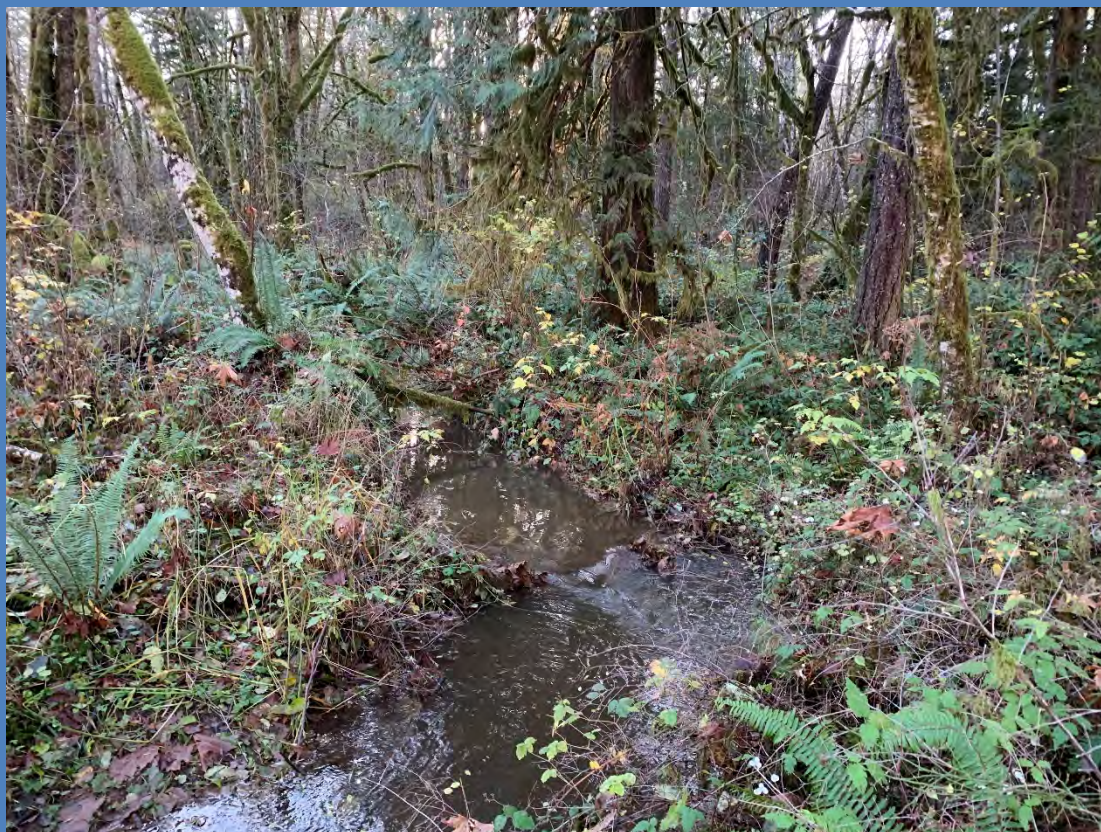
SHADOW VALLEY FISH PASSAGE DESIGN

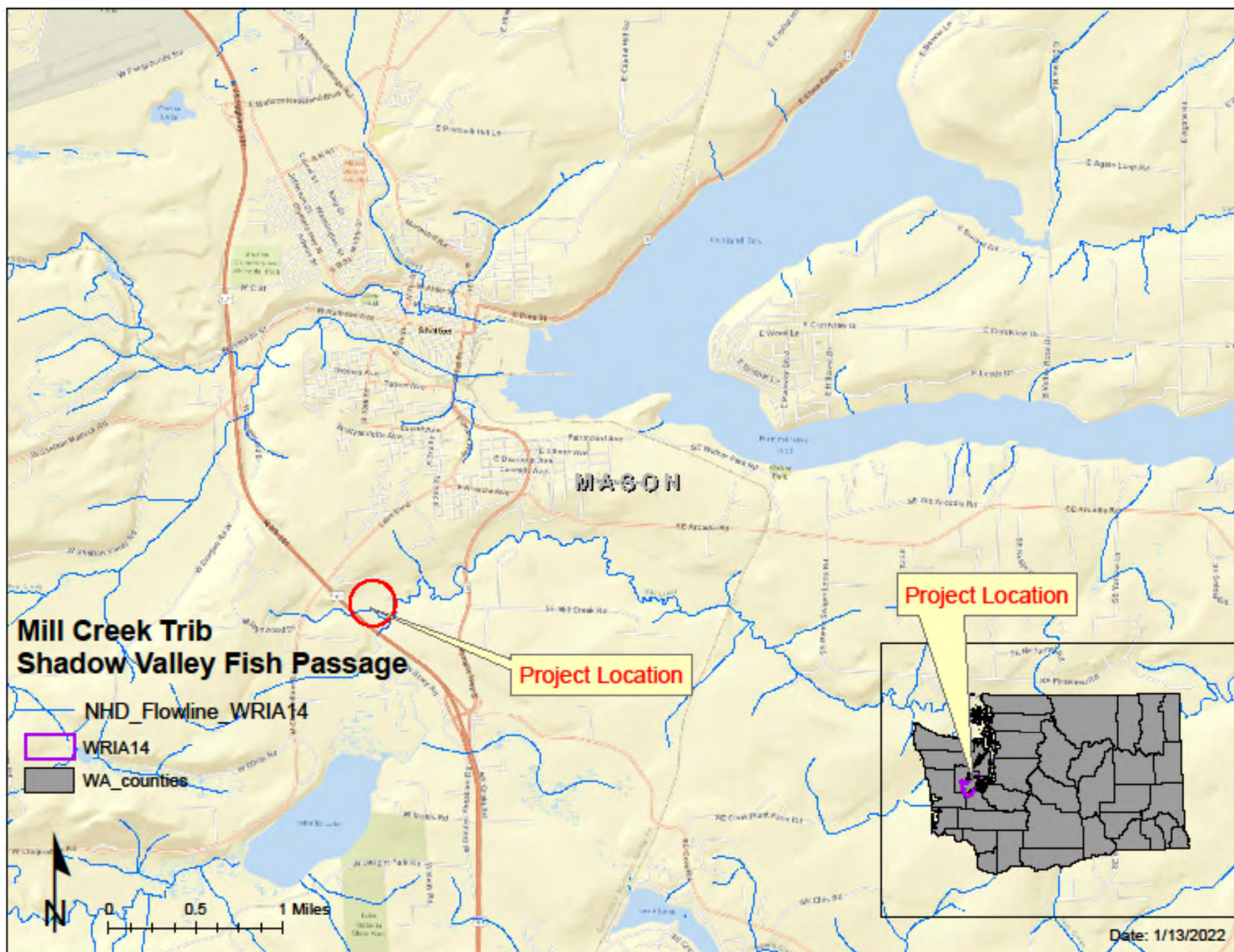
RCO PROJECT
#22-1178

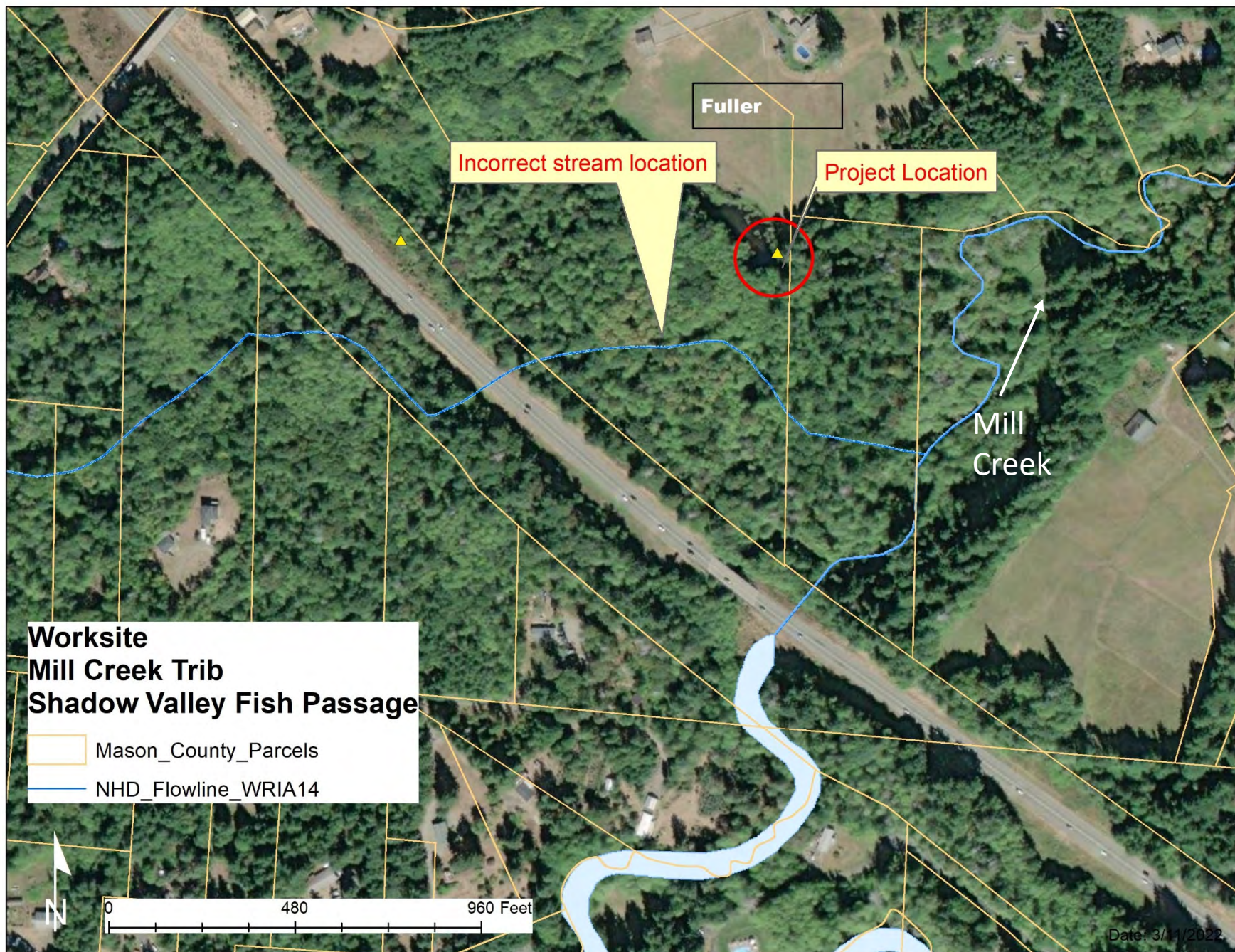
Request \$140,000

Tributary to Mill Creek
Hammersley Inlet

Replaces fish ladder
project

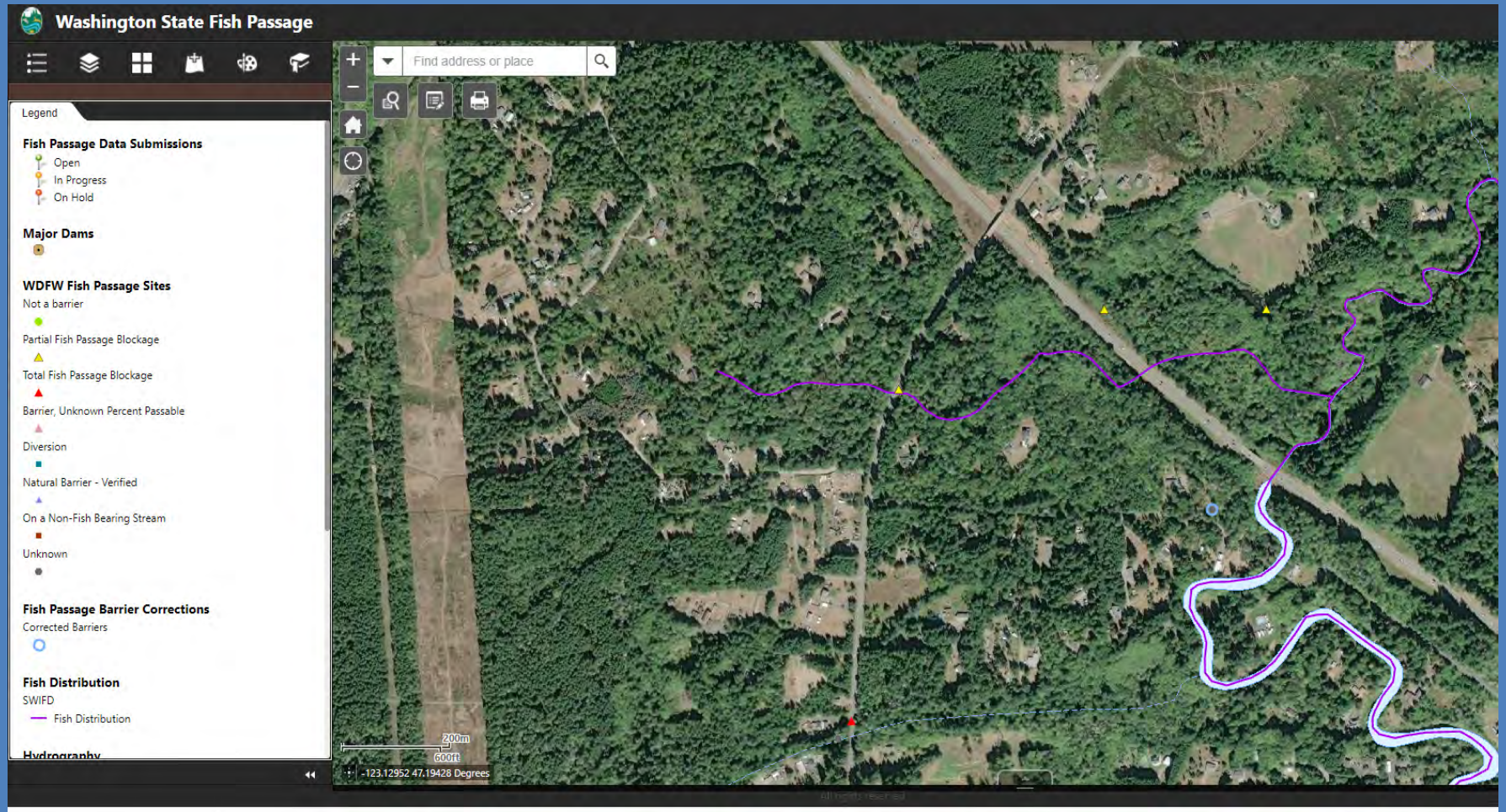






HABITAT GAIN

0.6 – 0.7 mile ESTIMATED



PROPOSAL

- **Design-only (no match)**
- **Preliminary Design deliverable – 18 months**
- **Correction of failing fish ladder, 25+ yrs. old**
- **Fish passage with ~0.6-0.7 mile habitat gain**
- **Documented spawning reach for coho and chum salmon**

FSHPT RESTORATION PRIORITIES

Lower Mill Creek Reach

Restoration priority: high

Conservation priority: medium

Salmon abundance (reach): highest

Salmon abundance (watershed): highest

Species present:

Coho, Fall Chum, Winter Steelhead, Coastal Cutthroat

Limiting KEAs: steam temp, sediment, complexity

Add Fish Passage

Summary

- Design phase
- Restores passage to Mill Creek Trib., a high salmon use Reach
- Replaces outdated fish ladder
- High quality spawning areas above barrier, especially for chum
- Landowner wants to keep artificial 'pond', which is now a well established wetland with good rearing and riparian habitat
- Periodic adult fish access above overflow culvert may be detrimental to out-migrating fry. Thus, time sensitive need

Projected Budget

Amount from RCO	\$ 140,000
<u>Match, not required</u>	<u>\$ 0</u>
Project Total	\$ 140,000



WDFW Site ID 14.0029D 0.13

25+ yr. old wooden fish ladder

Cooperative project between Mason CD, SPSSEG, US Fish and Wildlife and others

Work program employed former forestry workers

Now failing due to age and damage to wood baffles



Spawning chum at project site

Spawning coho have been documented by landowner

